



# **SELF-WATERING POT PLANT WITH LED GROW LIGHT**

CTPTPLHYDRA



# SAFETY & WARNINGS

For best results, ensure you read the following before planting anything:

- Fertilizer/water injection hole: Replace water every 2-3 weeks
- Attention to water shortage: According to the growth habits of plants, timely supplement plants with appropriate water
- Applicable plants: Suitable for any plants
- Nutrient solution: This product is not suitable for nutrient solution and seeds, please buy it yourself and use it according to the nutrient solution instructions
- Try to keep the environment ventilated and keep the ambient temperature of most plants within 30 degrees
- Ensure that the product is used in normal environment
- Do not knock over the product when it is working
- This product has no waterproof function, do not over-water.
- The germination stage of seeds has high requirements on the environment, such as the quality of seeds, environmental temperature, humidity and nutrients in planting media.

These factors will affect the success rate of seedlings, so the stage of seedling emergence is best completed under the guidance of professional company or personnel. Purchasing seedling transplants can make the success rate higher.

# COMPONENTS



Planting basin



LED light pole



Adapter

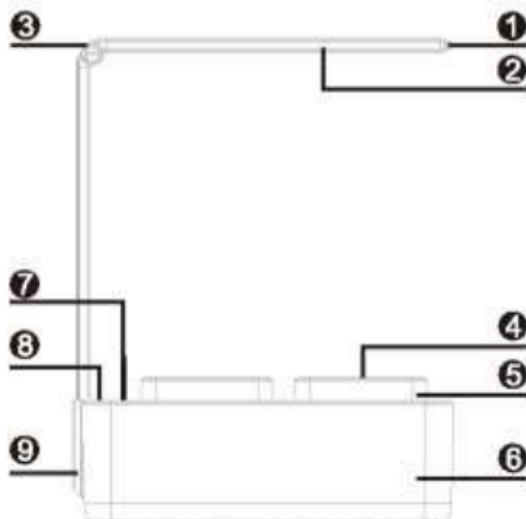


Planting pot



User guide

# OVERVIEW

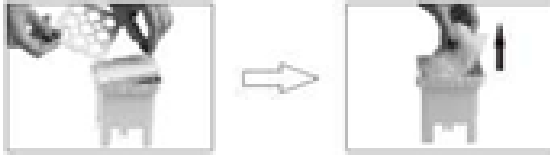


- |   |                 |   |                       |
|---|-----------------|---|-----------------------|
| 1 | ON/OFF switch   | 6 | Basin body            |
| 2 | LED chip 5730   | 7 | Fertilizer fill holes |
| 3 | Rotary screw    | 8 | Power indicator       |
| 4 | Planting medium | 9 | Adapter port          |
| 5 | Planting pot    |   |                       |

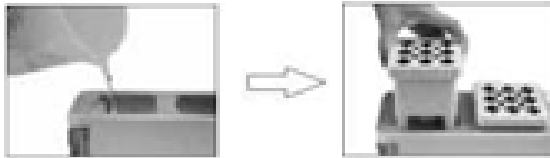
# ASSEMBLY

## How to Use

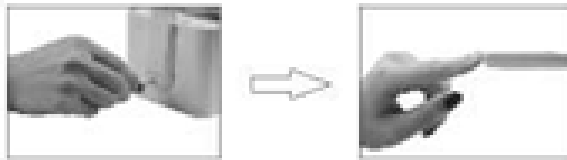
1. Ensure all components/accessories are present before beginning.
2. Open the planting pot grill, remove out the cotton pad and remove the planting medium.



3. Pour the water into the basin body and put it into the planting pot.



4. Plug in the power and turn on the ON/OFF switch.



# OPERATION



ON/OFF switch	Mode	Description
Press once	Natural Light Mode	Full spectrum light 16 hours working 8 hours sleep
Press twice	Growing Mode	Blue and Red light* 16 hours working 8 hours sleep
Press three times	Reading Mode	White light Long-press to adjust brightness

\*blue light promotes the growth of stems and leaves,  
the red light is for flower's blooming.

## Wide Usage

The pot plant can be placed in any location, such as bedroom, kitchen, living room, office, windowsill, etc. Plant your favourite vegetables, flowers, fruits and herbs.

**Herbs:** Basil, rosemary, thyme, musk, mint.

**Vegetables:** lettuce, chili, spinach, baby spinach, onion, leek, salad, coriander, green pepper, peas.

**Melons:** tomatoes, cucumbers, potatoes, cherries.

**Flowers:** Roses, baby's breath, lilies, chrysanthemums, daffodils.

# SPECIFICATIONS

<b>Material</b>	ABS + Aluminium Alloy
<b>Power</b>	8.5W
<b>Input</b>	AC 100-240V - 50/60 HZ
<b>Output</b>	DC 12.6V / 1A
<b>LED Quantity</b>	Red (8pcs) + Blue (2pcs) + White (8pcs)
<b>Colour Temperature</b>	5500K
<b>Red Light Wavelength</b>	660 nm
<b>Blue Light Wavelength</b>	460-470 nm
<b>Working Life</b>	35,000 hours



# TROUBLESHOOTING

## **Nothing grows out of seedlings**

**Possible causes:** seed quality, growing methods and environment.

**Solution:** Buy good seeds, control the temperature of the environment, and keep well ventilated.

## **Transplantation does not grow**

**Possible causes:** Seedlings have been damaged during transplantation or proper transplantation methods and environmental controls have not been followed.

**Solution:** Understand the transplantation method of plants before transplantation and operate according to the method to control the planting environment: environmental temperature, etc.

## **Stems are slender**

**Possible cause:** Inadequate nutrition.

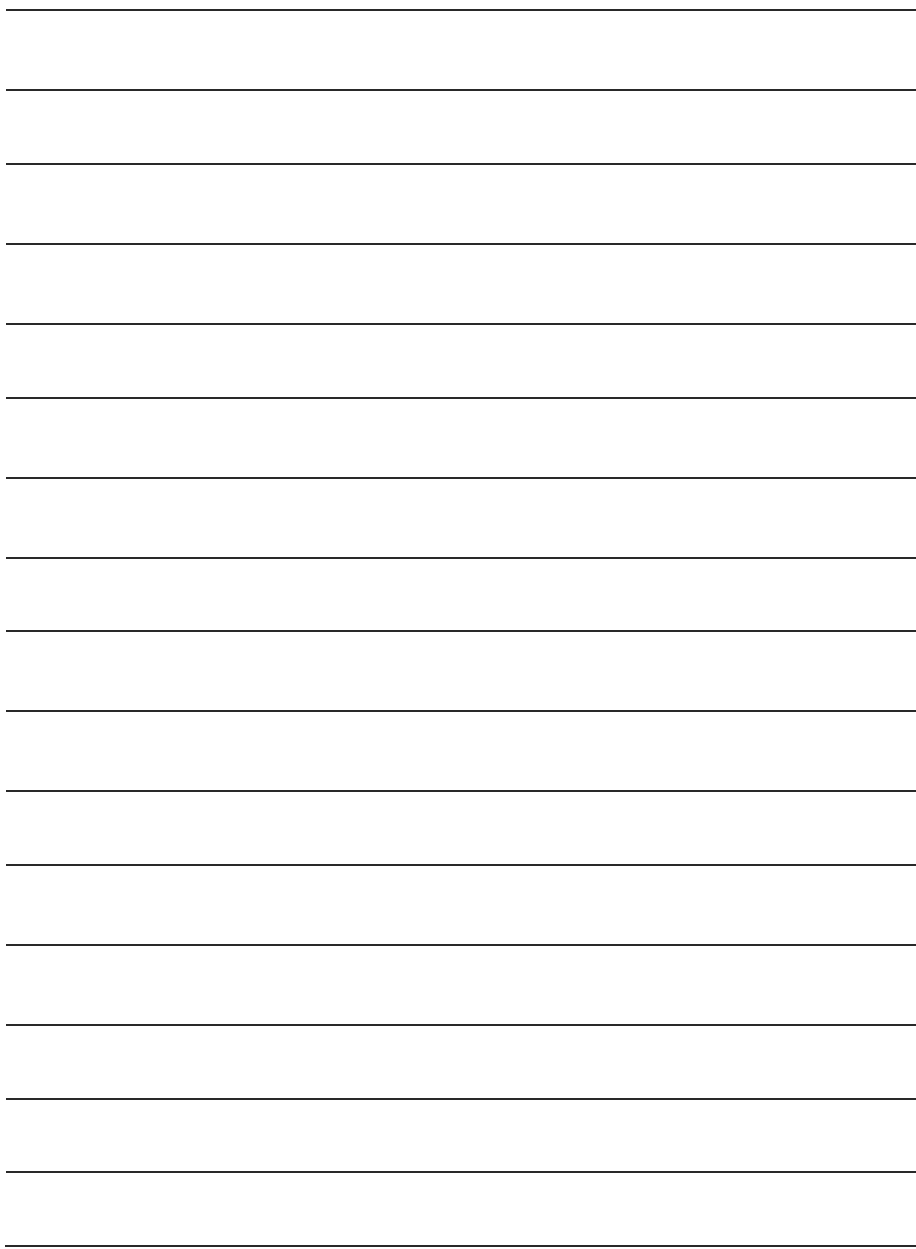
**Solution:** Supplement nutrient solution.

## **The leaves turn yellow or wither**

**Possible causes:** inadequate nutrition, high ambient temperature, poor ventilation, poor water quality, etc.

**Solution:** Replenish the nutrient solution, keep the environment ventilated, reduce the ambient temperature, and change the water regularly.





### **Need more information?**

We hope that this user guide has given you the assistance needed for a simple set-up. For the most up-to-date guide for your product, as well as any additional assistance you may require, head online to **[help.kogan.com](https://help.kogan.com)**

**kogan.com**